

Hamilton County Secure FTP

This site employs SFTP encryption so that communications are secure. It will require you to use an SFTP compatible client, rather than a standard browser like Internet Explorer or Fire Fox.

There are several freeware clients that you can use for SFTP, you may already be using one. Below are links for two that are pretty popular. But there are many others available, just search for: free sftp client Your Network Administrator may need to do the download and install.

WinSCP <http://winscp.net/eng/download.php>

FileZilla <http://filezilla-project.org/>

Several are listed here: <http://www.thefreecountry.com/webmaster/freeftpclients.shtml>

Attached are notes to help you setup and use FileZilla, others will be similar. If you have problems connecting, please email webmaster@hamiltoncounty.in.gov and ask for “SFTP Assistance”

FileZilla Basics

Typical first time setup: You will need to download the client (make note of where you save it), and then install it by double clicking and follow the instructions shown. If you like, you can have it add an icon to your desktop.

To Connect: Open the client application and enter the following values:

Host: sftp://ftp.hamiltoncounty.in.gov

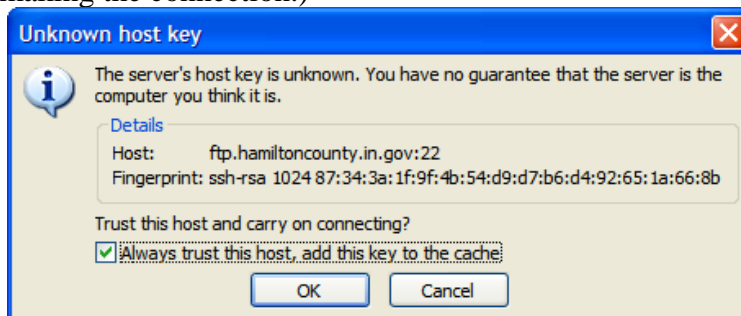
Username: same as before

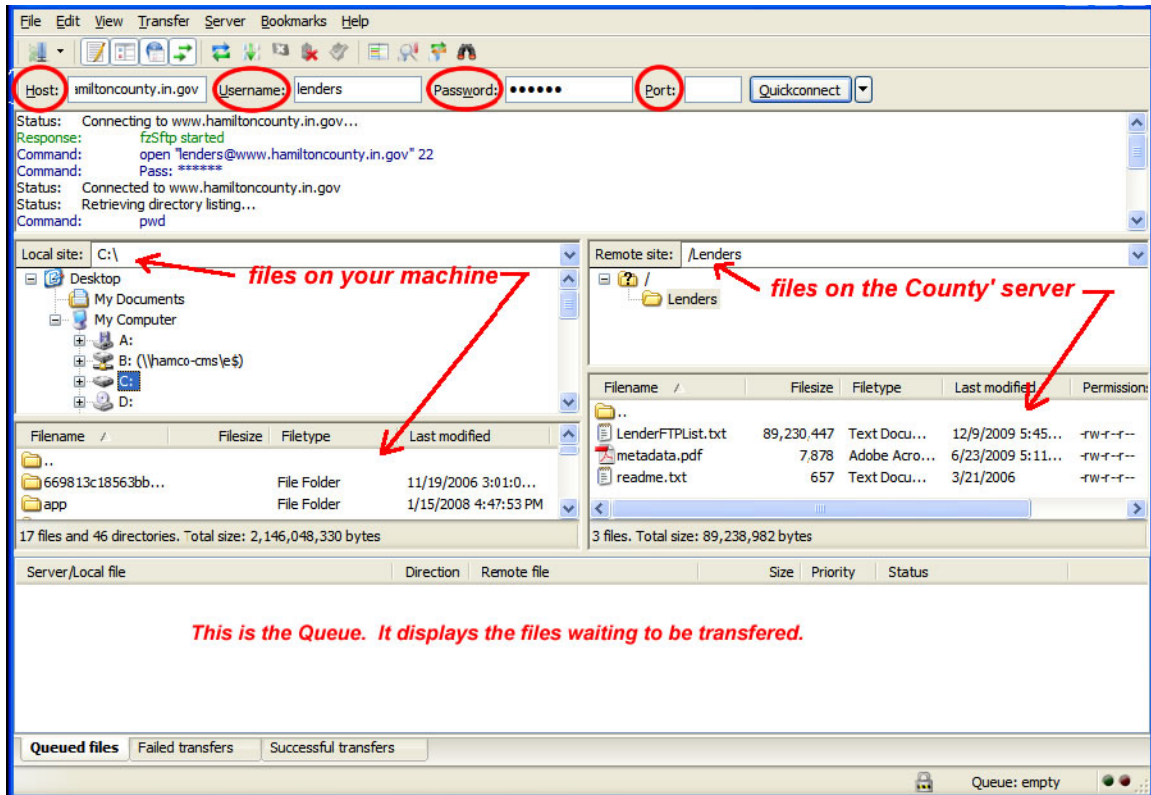
Password: same as before

Port: 22

Click the Quickconnect button.

You will probably get a popup about an Unknown host key. Make sure the Host is “ftp.hamiltoncounty.in.gov:22”, check the box to always trust, and click OK. This will make an entry on your PC, allowing your PC to recognize the host key in the future. (The host key is kind of like caller id on your phone; it tells your PC who is ‘calling’ before making the connection.)





Downloads: On the left side, navigate to the download location on your machine. On the right side, select the files you want from the County server and drag them to the left side of the screen (or to the Queue box). The files should disappear from the queue box once they are done copying.

Upload to the County: Not all SFTP accounts allow you to upload. If yours does, it is pretty much the opposite of Downloads. Select the file(s) from your network/PC and drag them to the right side.

Tip:

To make future downloads easier; you can save the connection settings. Once you're connected, go to File, 'Copy current connection to Site Manger'. Enter a Site name of your choice and click OK. Next time, you won't need to enter the values. Just go to File, Site Manager, pick the Site name, and click Connect. But only do this with a PC in a secure location; anyone that has access to your PC and client would be able to run this connection.

