



*Kenton C. Ward, CFM*  
*Surveyor of Hamilton County*  
*Phone (317) 776-8495*  
*Fax (317) 776-9628*

*Suite 188*  
*One Hamilton County Square*  
*Noblesville, Indiana 46060-2230*

October 1, 2020

TO: Hamilton County Drainage Board

RE: Thorpe Creek Drain, shed correction for Woods at Thorpe Creek Sec. 5

Upon the review of the Thorpe Creek drainage shed it has been discovered that the area of the Woods at Thorpe Creek Section 5 Subdivision now outlets north into the Thorpe Creek drainage shed and is benefitted by that drain. Due to the development of Woods at Thorpe Creek Section 5 the drainage shed should be revised by including the tracts shown on the attached schedule of assessments.

The total assessment for the 21 parcels to be added to Thorpe Creek is \$745.00. This will begin collections in May 2021.

I recommend the Board set a hearing for November 23, 2020 for this shed correction.

Kenton C. Ward, CFM, CISEC, CESSWI, CPMSM  
Hamilton County Surveyor

KCW/pll

**Thorpe Creek #223**

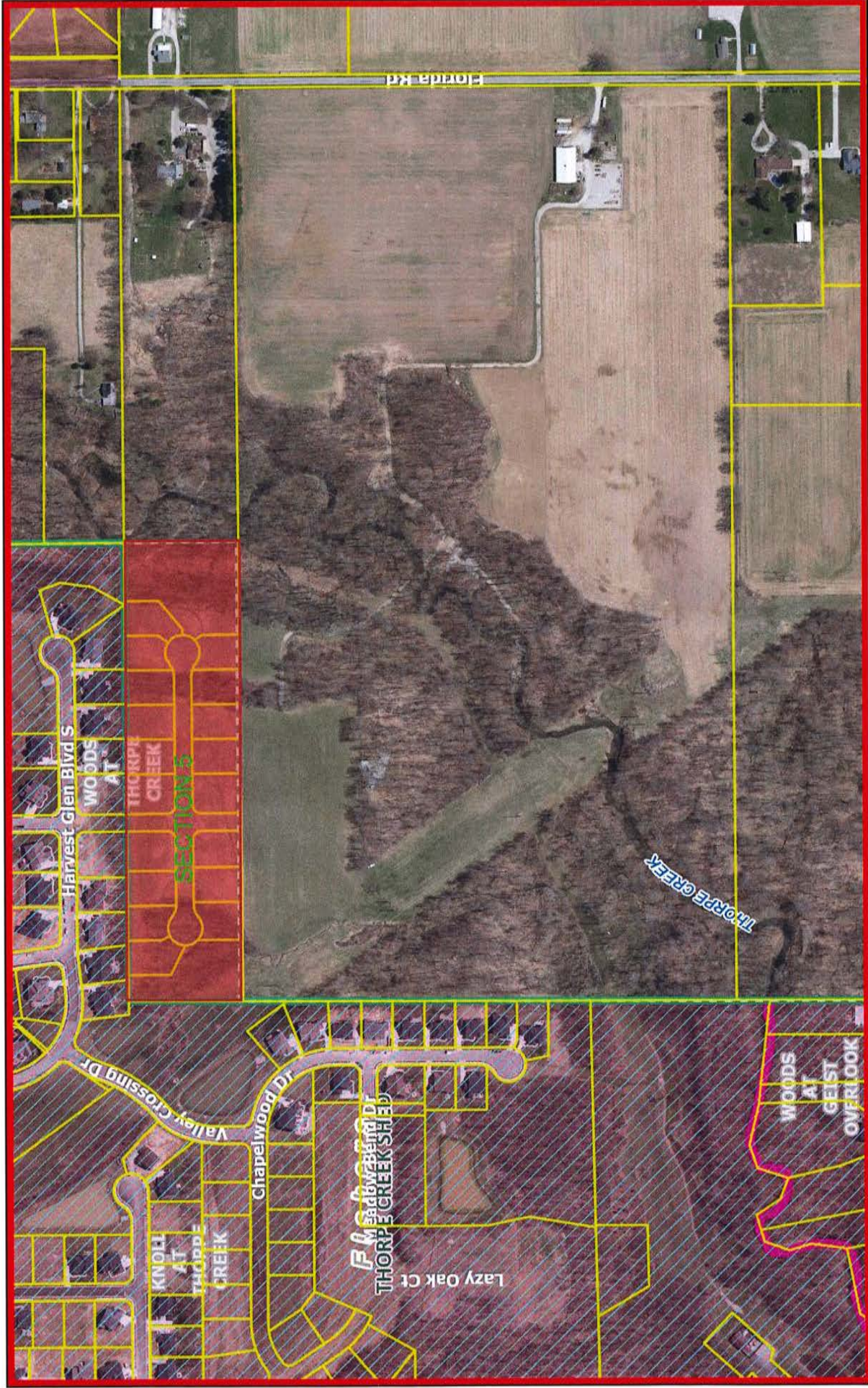
Woods at Thorpe Creek Sec. 5 - Shed correction.

Hearing: 11/23/2020

Un-Regulated Subd. Road	Rate	Minimum
	\$5.00	\$35.00
	\$10.00	

Parcel	Owner	Desc	Rate	Ben	Annual Assmt.	% of Total
13-12-31-00-00-039.001	Grand Communities LLC	S31 T18 R6 Woods at Thorpe Creek Sec. 5 CA AN, 1.75Ac	Un-Regulated Subd.	1.75	\$35.00	4.70%
13-12-31-00-13-001.000	Grand Communities LLC	S31 T18 R6 Woods at Thorpe Creek Sec. 5 Lot 420	Un-Regulated Subd.	One Lot	\$35.00	4.70%
13-12-31-00-13-002.000	Grand Communities LLC	S31 T18 R6 Woods at Thorpe Creek Sec. 5 Lot 421	Un-Regulated Subd.	One Lot	\$35.00	4.70%
13-12-31-00-13-003.000	Grand Communities LLC	S31 T18 R6 Woods at Thorpe Creek Sec. 5 Lot 422	Un-Regulated Subd.	One Lot	\$35.00	4.70%
13-12-31-00-13-004.000	Grand Communities LLC	S31 T18 R6 Woods at Thorpe Creek Sec. 5 Lot 423	Un-Regulated Subd.	One Lot	\$35.00	4.70%
13-12-31-00-13-005.000	Grand Communities LLC	S31 T18 R6 Woods at Thorpe Creek Sec. 5 Lot 424	Un-Regulated Subd.	One Lot	\$35.00	4.70%
13-12-31-00-13-006.000	Grand Communities LLC	S31 T18 R6 Woods at Thorpe Creek Sec. 5 Lot 425	Un-Regulated Subd.	One Lot	\$35.00	4.70%
13-12-31-00-13-007.000	Grand Communities LLC	S31 T18 R6 Woods at Thorpe Creek Sec. 5 Lot 426	Un-Regulated Subd.	One Lot	\$35.00	4.70%
13-12-31-00-13-008.000	Grand Communities LLC	S31 T18 R6 Woods at Thorpe Creek Sec. 5 Lot 427	Un-Regulated Subd.	One Lot	\$35.00	4.70%
13-12-31-00-13-009.000	Grand Communities LLC	S31 T18 R6 Woods at Thorpe Creek Sec. 5 Lot 428	Un-Regulated Subd.	One Lot	\$35.00	4.70%
13-12-31-00-13-010.000	Grand Communities LLC	S31 T18 R6 Woods at Thorpe Creek Sec. 5 Lot 429	Un-Regulated Subd.	One Lot	\$35.00	4.70%
13-12-31-00-13-011.000	Grand Communities LLC	S31 T18 R6 Woods at Thorpe Creek Sec. 5 Lot 430	Un-Regulated Subd.	One Lot	\$35.00	4.70%
13-12-31-00-13-012.000	Grand Communities LLC	S31 T18 R6 Woods at Thorpe Creek Sec. 5 Lot 431	Un-Regulated Subd.	One Lot	\$35.00	4.70%
13-12-31-00-13-013.000	Grand Communities LLC	S31 T18 R6 Woods at Thorpe Creek Sec. 5 Lot 432	Un-Regulated Subd.	One Lot	\$35.00	4.70%
13-12-31-00-13-014.000	Grand Communities LLC	S31 T18 R6 Woods at Thorpe Creek Sec. 5 Lot 433	Un-Regulated Subd.	One Lot	\$35.00	4.70%
13-12-31-00-13-015.000	Grand Communities LLC	S31 T18 R6 Woods at Thorpe Creek Sec. 5 Lot 434	Un-Regulated Subd.	One Lot	\$35.00	4.70%
13-12-31-00-13-016.000	Grand Communities LLC	S31 T18 R6 Woods at Thorpe Creek Sec. 5 Lot 435	Un-Regulated Subd.	One Lot	\$35.00	4.70%
13-12-31-00-13-017.000	Grand Communities LLC	S31 T18 R6 Woods at Thorpe Creek Sec. 5 Lot 436	Un-Regulated Subd.	One Lot	\$35.00	4.70%
13-12-31-00-13-018.000	Grand Communities LLC	S31 T18 R6 Woods at Thorpe Creek Sec. 5 Lot 437	Un-Regulated Subd.	One Lot	\$35.00	4.70%
13-12-31-00-13-019.000	Grand Communities LLC	S31 T18 R6 Woods at Thorpe Creek Sec. 5 CA AM, 1.00Ac	Un-Regulated Subd.	1.00	\$35.00	4.70%
99-99-99-99-99-999.007	City of Fishers	S31 T18 R6 Woods at Thorpe Creek Sec. 5 Roads, 4.50Ac	Road	4.50	\$45.00	6.04%
Totals: 18 Lots &				7.25	\$745.00	100.0%

# Woods at Thorpe Creek, Section 5



October 2, 2020

- Parcel Boundary (public)
- Unincorporated Towns
- Subdivisions
- Interstates & US Highways
- State Highways
- Major Roads
- Minor Roads
- Lakes & Reservoirs
- Rivers & Streams
- Sheds

Hamilton County compiled this map. Although strict accuracy standards have been employed, Hamilton County does not warrant or guarantee the accuracy of the information contained herein and disclaims any and all liability resulting from any error or omission. Author: Hamilton County